



Roxtec CF 8/32 EMC transit

High cable density transit for electromagnetic shielding, with aluminum frame.

The Roxtec CF 8 EMC and CF 32 EMC are cable entry seals designed to maintain the shielding performance of the enclosure. The seals help protecting vulnerable electronics from electromagnetic threats. The transits have frames of cast nickel-plated aluminum. The Roxtec ES sealing modules for electromagnetic shielding are adaptable to cables of different sizes.



- Rodent resistant
- Light-weight
- Area efficient
- Allows pre-terminated cables

Product characteristics



IP/UL NEMA



EMI protection

Structure of installation



Cabinets & enclosures

Ratings & certificates

Tightness

- IP 66/67, UL/NEMA 4,4X,12,13

Supports

- Electromagnetic shielding
- Potential equalization

Frame dimensions

in/lbs

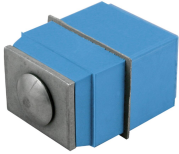
The frame variants below are a limited selection. For the full range of frames and configurations, please visit [roxtec.com](https://www.roxtec.com).

Product	Frame openings	Packing space	External dimensions WxHxD	Aperture dimensions w x h	Weight	Art. no
CF 8 EMC	1	1.575 x 3.15	2.953 x 5.512 x 2.717	2.402(+0.02/-0.02) x 5(+0.02/-0.02)	0.82	ECF0000080035
CF 32 EMC	2	1.575 x 6.299	5.118 x 9.055 x 2.717	4.331(+0.02/-0.02) x 8.504(+0.02/-0.02)	2.7	ECF0000320035

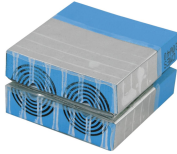


Sealing components

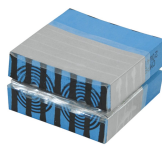
Sealing components



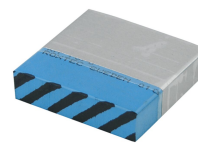
C Compression EMC



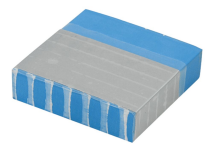
CM ES module with Multidiameter™



CM PE module with Multidiameter™



CM PE solid compensation module



CM ES solid compensation module



Lubricant

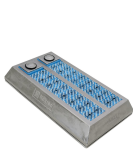
For detailed information, please visit [roxtec.com](https://www.roxtec.com).

Pre-configured transit kits

in/lbs



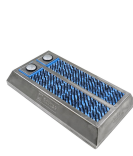
CF 8/8 ES



CF 32/32 ES



CF 8/8 PE



CF 32/32 PE

Product	Configuration	External dimensions WxHxD	Aperture dimensions w x h	Weight	Art. no
CF 8/5 ES	4x (0.138-0.650), 1x (0.374-1.280)	2.953 x 5.512 x 2.953	2.402(+0.02/-0.02) x 5(+0.02/-0.02)	2.3	192363
CF 8/8 ES	8x (0.138-0.650)	2.953 x 5.512 x 2.953	2.402(+0.02/-0.02) x 5(+0.02/-0.02)	2.2	192364
CF 32/8 ES	8x (0.374-1.280)	5.118 x 9.055 x 2.953	4.331(+0.02/-0.02) x 8.504(+0.02/-0.02)	5.6	192365
CF 32/20 ES	16x (0.138-0.650), 4x (0.374-1.280)	5.118 x 9.055 x 2.953	4.331(+0.02/-0.02) x 8.504(+0.02/-0.02)	5.6	192366
CF 32/32 ES	32x (0.138-0.650)	5.118 x 9.055 x 2.953	4.331(+0.02/-0.02) x 8.504(+0.02/-0.02)	5.6	192367
CF 8/5 PE	4x (0.138-0.650), 1x (0.374-1.280)	2.953 x 5.512 x 2.717	2.402(+0.02/-0.02) x 5(+0.02/-0.02)	1.8	192368
CF 8/8 PE	8x (0.138-0.650)	2.953 x 5.512 x 2.717	2.402(+0.02/-0.02) x 5(+0.02/-0.02)	1.8	192369
CF 32/8 PE	8x (0.374-1.280)	5.118 x 9.055 x 2.717	4.331(+0.02/-0.02) x 8.504(+0.02/-0.02)	5.1	192370
CF 32/20 PE	16x (0.138-0.650), 4x (0.374-1.280)	5.118 x 9.055 x 2.717	4.331(+0.02/-0.02) x 8.504(+0.02/-0.02)	5.1	192371
CF 32/32 PE	32x (0.138-0.650)	5.118 x 9.055 x 2.717	4.331(+0.02/-0.02) x 8.504(+0.02/-0.02)	5.5	192372

The product information provided by Roxtec does not release the purchaser of the Roxtec system, or part thereof, from the obligation to independently determine the suitability of the products for the intended process, installation and/or use.

Roxtec gives no guarantee for the Roxtec system or any part thereof and assumes no liability for any loss or damage whatsoever, whether direct, indirect, consequential, loss of profit or otherwise, occurred or caused by the Roxtec systems or installations containing components not manufactured by an authorized manufacturer and/or occurred or caused by the use of the Roxtec system in a manner or for an application other than for which the Roxtec system was designed or intended.

Roxtec expressly excludes any implied warranties of merchantability and fitness for a particular purpose and all other express or implied representations and warranties provided by statute or common law. User determines suitability of the Roxtec system for intended use and assumes all risk and liability in connection therewith. In no event shall Roxtec be liable for indirect, consequential, punitive, special, exemplary or incidental damages or losses.

The Roxtec products are offered and sold in accordance with the conditions of the Roxtec General Terms of Sales. The latest version of the Roxtec General Terms of Sales can be downloaded from <https://www.roxtec.com/en/about-us/about-roxtec/general-terms-of-sales/>

We reserve the right to make changes to the product and technical information without further notice. Any errors in print or entry are no claims for indemnity. The content of this publication is the property of Roxtec International AB and is protected by copyright.

This document was generated on: 2024-05-03